

Multi-Channel Temperature Verification System



Biofermentation & Biopharma

Petrochemical & Energy

Life science

Industry



www.innovabiomed.com

Multi-Channel Temperature Verification System

► Product Description

The IPTT Temperature verification system is an innovative real-time device meticulously crafted for validating the temperature control precision of laboratory instruments. This system integrates a high-precision PT1000 sensor with a cutting-edge signal acquisition system, ensuring remarkable linearity and rapid response times. It enables real-time monitoring of temperature accuracy, uniformity, stability, and ramping rate in PCR equipment. This makes it an indispensable tool for temperature control equipment manufacturers, equipment maintenance service centers, and metrology laboratories. The equipment is compact and can work with external power supply, which is convenient for on-site inspection.

It is suitable to measure below pcr/qpcr devices:

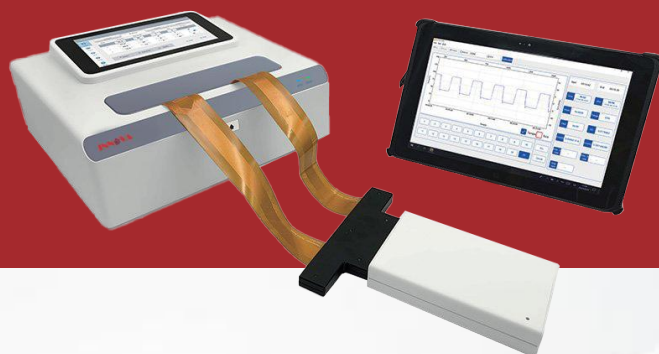
96-well PCR/QPCR

384-well PCR/QPCR

8/16/48-well PCR/QPCR

deepwell plate

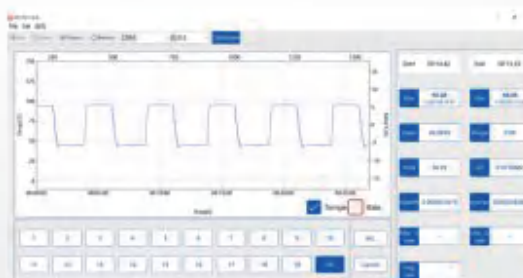
Dry bath incubator etc devices



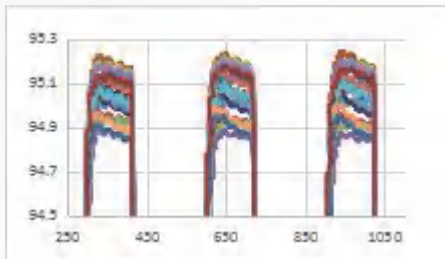
► FEATURES

APPLICATIONS:

- Manufacturers of Thermal cycler(PCR), Real-time Quantitative PCR(qPCR), Dry block heater, Water Bath, Incubator, for the instrument temperature calibration in development, production and quality control;
- On-site installation checking, temperature calibration and instrument performance qualification of PCR, qPCR, Dry block heater, Water Bath, Incubator equipment;
- Routine maintenance, inspection and calibration of laboratory temperature control equipment;
- Optimization of temperature control process for PCR reagent development;

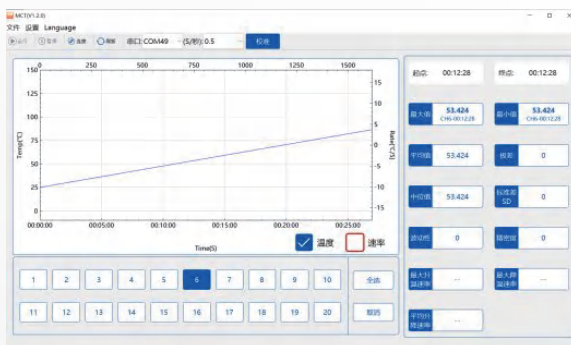
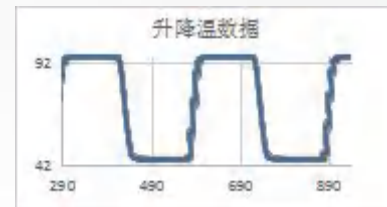


- Multiple probes are suitable for tube mode, plate mode and other customized probe. The high-precision PT sensor is wrapped with metal, which can precisely detect the actual temperature of the machine;



- Real-time acquisition in multi-channels allow the detection of temperature deviation between different wells of PCR instrument, effectively monitoring the temperature edge effect of the well plate;

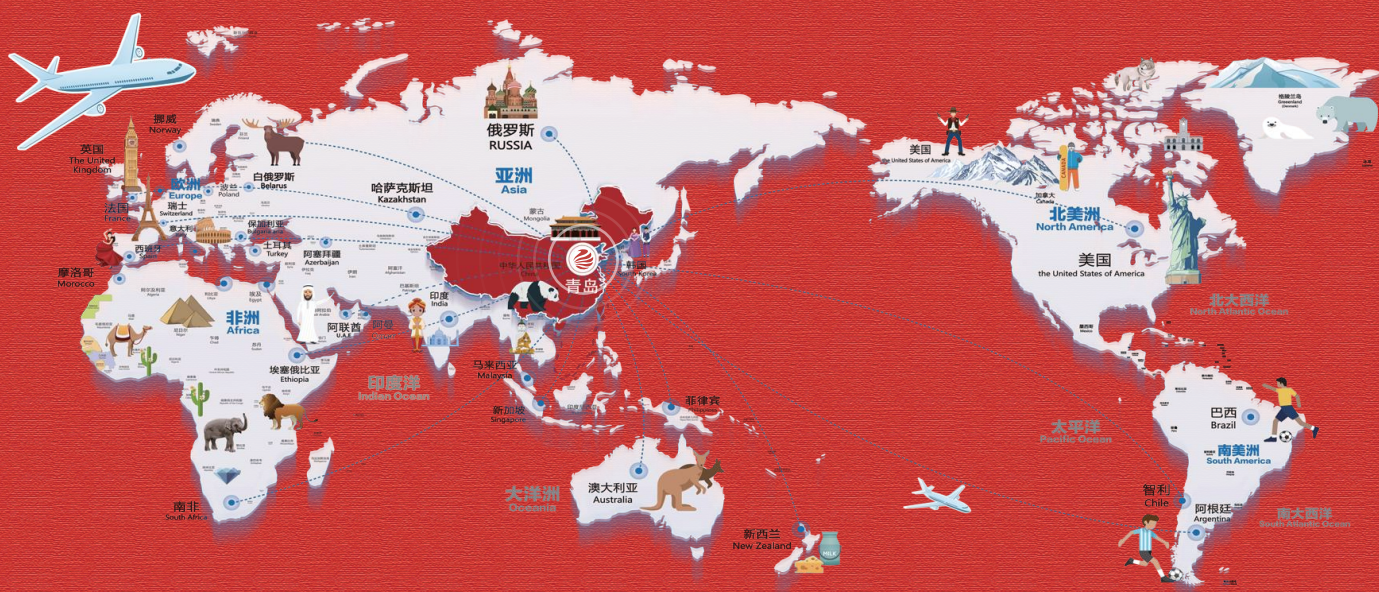
- High-speed temperature acquisition up to 20 channels/0.5S, suitable for most real-time data acquisition of ramping rate below 10°C/S in the PCR tube, without losing temperature data;



- The device comes with easy-to-use software and supports temperature accuracy and uniformity measurement in stable period, analysis and measurement of heating and cooling speed, dynamic tracking of temperature curve. It supports temperature curve selection, marking, tracking and data export to excel for further analysis;

Specification	Parameter
Temperature Range	0°C~120°C
Channels	Up to 20
Temperature Sensor	PT1000
Temperature Resolution	0.01°C
Compatible Probe	96 microplate, 8-strip tube, 2*8strip tube, flat plate, deep well plate and available for customized probes
Accuracy	0.1°C
Temperature Stability	< 0.1°C
Temperature Uniformity	< 0.2°C
Linearity	R ² >0.9999
Acquisition Speed	20 channels/0.5S
Software Function	Real-time display curve, Temperature marking, Dynamic curve tracking, Temperature accuracy, Stability, Uniformity analysis, Ramping rate analysis, Data export
Environment	10°C~35°C, humidity 10%~90% (non-condensing)
Storage temperature	-20°C~60°C
Power	DC5V, 2A, 4W
Dimension & Weight	100*150*25mm, 0.5Kg

Model No	Product Description	Image
MCT	Temperature verification device (main unit, power plug, data cable, software)	
MCT96-20T	96wells 20-channel probe , For PCR machine	
MCT8-8T	8wells 8-channel probe,For PCR machine	
MCT8-16T	2*8 wells 16-channel probe, For PCR machine	
MCT96-20F	96wells 20-channel flat plate probe	
MCT-1T	1-channel probe,can be customized upto 20 channels.Probe size fits for 200ul,1.5ml,2ml,5ml micro tube and other tubes or blocks which has the same diameter.Using with 942005 MCT-A	
MCT-A	Probe adaptor plug, using with MCT-1T, or other customized probe	
MCT-P20	20-channel probe for deep well plate or block use.	
MCT-P8	8-channel probe for deep well plate or block use.	
MCT-C	Customized probe type , make to order	Customized



Qingdao Innova Bio-Meditech Co., Ltd

Add.: No. 176 Jufeng Road, 266199, Qingdao, China

Tel.: +86 532 8789 0634

Email: info@innobiomed.com

Web: www.innovabiomed.com

